

# J&N Stone

2024 Edition



*Skillfully Crafted Stone Veneer*  
[www.jnstone.com](http://www.jnstone.com)



J&N Stone, Inc. entered into the manufactured stone industry in 1973 as a family business. Our goal then, and still today, is to manufacture and install precast stone veneer with the utmost quality and care. We strive to make sure every customer is satisfied with the beauty and craftsmanship of our manufactured stone products. For over forty years we have specialized in creating stone veneer products that are consistent in color, long withstanding and astoundingly realistic. Enhance your home with the beauty of stone for a fraction of the cost of natural stone by choosing our skillfully crafted stone veneer.



## *Contents*

Ashlar	4
Brick-Ease	8
Cliftrrock	12
Cut Cobblestone	16
Fieldstone	20
Handsplit	22
Laytite	24
Ledge	28
Monarch	30
Plankwood	32
Quartz	34
Ridgestone	36
Stack-Ease	40
Accessories	44



# Ashlar

Finely dressed lines and natural color palettes give Ashlar a warm and traditional appearance. Each tightly stacked stone was precisely hand-chiseled to create this rectangular style. Ashlar is a timeless style that will add elegance to any application.



Arkansas



Fawn River



Country



*Oregon Mist*



*Sterling Gray*



Rocca



Refton  
w/ barn beam mantel



# Brick-Ease

Brick-Ease is a 1" brick veneer that installs over virtually any surface. With two distinctive styles, Brick-Ease provides a charming appearance. Our thin brick thrives as a standalone product or acts as a great accent to any of our stone colors making Brick-Ease resoundingly versatile.



Standard Red



Rustic



Whiteland



*Desert Tan*



*Autumn*



# Cliftrack

Designed to stand out all on its own, Cliftrack is a beautiful new blend of our Laytite and smaller Ledge pieces. While it still has the smaller linear look from Laytite, it brings in more texture and depth from the Ledge to create an appealing design all around. Cliftrack will leave an impression on any type of project you may have.



Charleston



Belgrade



*Galveston Gray*



*Graphite*



*Bucks Creek*



# Cut Cobblestone

Mirroring the ageless appearance of hand carved stone, Cut Cobblestone has a beautiful profile. It combines rectangular shapes and irregular sizes with rough cut edges for an old world look and feel. Cut Cobblestone is a style that will bring beauty and class to any home or project.

CUT COBBLESTONE



Price



Country



Onyx



Desert Tan

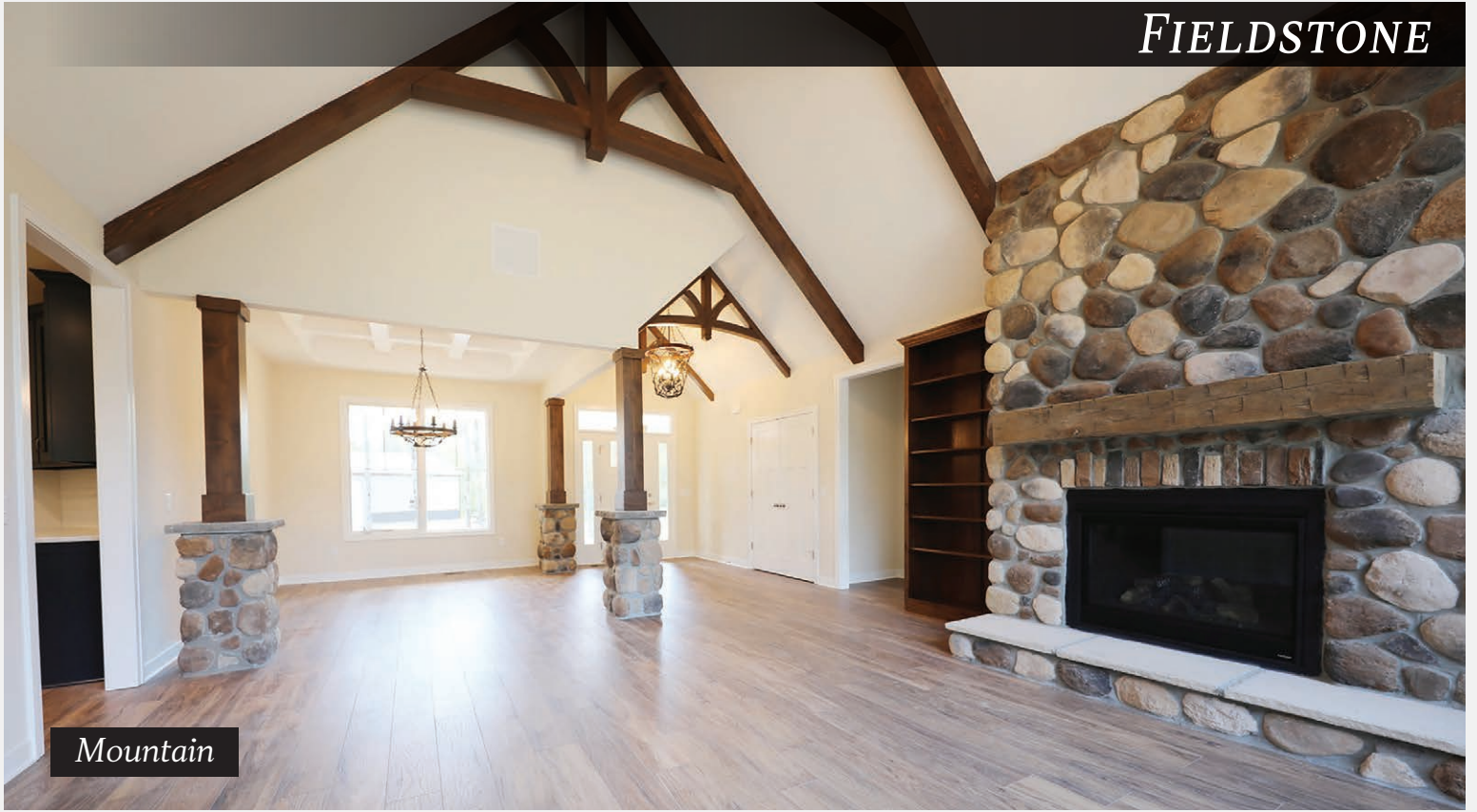


*Belgrade*



# *Fieldstone*

As the name describes, Fieldstone was created using natural stones collected from the fields of Indiana. Fieldstone has rounded edges, smooth surfaces and a random pattern. Its natural look and character make an impression wherever it is applied.



Mountain



Baugo Rust



# *Handsplit*

Mimicking a natural stone that has been split to show the inner beauty and color, Handsplit has an incomparable look all its own. Large round stones with a split face texture make up this stunning free-form pattern. Handsplit would be an excellent choice for a lake cottage or log cabin home.



Baugo Rust



Michigan

*Whiteland*  
w/ barn beam mantel



# *Laytite*

Laytite continues to be one of the most popular styles throughout the world. It offers a layered linear look which overall creates depth and dimension. With grout lines being less apparent, Laytite gives the impression of a clean balanced design. This stone pattern is a beautiful choice for any contemporary, craftsman, or modern style project.



Bucks Creek



Charleston



Belgrade



*Rocca*



*White Birch*



*Oregon Mist*



Galveston Gray



Graphite



Mystic Gray



# Ledge

Offering a more rustic silhouette, Ledge is a distinct style that has been in place for generations. This irregular shaped stone has a crisp angular face that produces depth and ruggedness. These defined features provide any application with the rustic charm of the countryside.



Dakota



Whiteland



Sterling Gray



Rocca

Arkansas  
w/ barn beam mantel



# Monarch

Boldly unique, Monarch is a mosaic of sharp cuts, irregular shapes and rough textures. The informality of these pieces blend together to create a distinct look and unique design. Monarch's versatile style fits in any traditional or contemporary setting.



Anagnos



# Plankwood

Designed to replicate old natural wood planks, our Plankwood is a manufactured stone product that will add beauty anywhere in your home. From fireplaces, to accent walls, to backsplashes, it is a versatile product that is perfect for DIY's. By offering two different Plankwood sizes, this product gives you many options to fit the look you want for your home. Save time and money by using Plankwood for your next project.

*PLANKWOOD*



*Natural*



*Weathered*



*Weathered*



# Quartz

Quartz is a combination of Cut Cobblestone and Ledge. By blending Cut Cobblestone's hand carved edges with Ledge's rough irregular pieces, this style becomes the ideal mix for any application. Quartz creates a natural look with its varied shapes and sizes adding beauty and exquisiteness all its own.



Price



Whiteland



# Ridgestone

Ridgestone is a versatile mixture of rectangular and linear stones. Ridgestone includes Laytite's tailored straight lines with the added richness of Cut Cobblestone's roughly chiseled edges. This visually balanced combination is one of our most popular and striking blended styles.



Galveston Gray



Whiteland



*Harbor Gray*



*Rocca*



Dakota



Graphite



Bucks Creek Sage



# *Stack-Ease*

Designed to be installed without any exposed mortar joints, Stack-Ease has a clean and defined design. Its molded 3" panels provide you with the look of stacked stone, but with the advantage of easy installation. It is a perfect choice for DIY'ers. Stack-Ease has become one of our best sellers because its beauty and versatility compliments any style from classic to contemporary.



*Copperton*



*Belgrade*



*Charleston*



*Lockport*



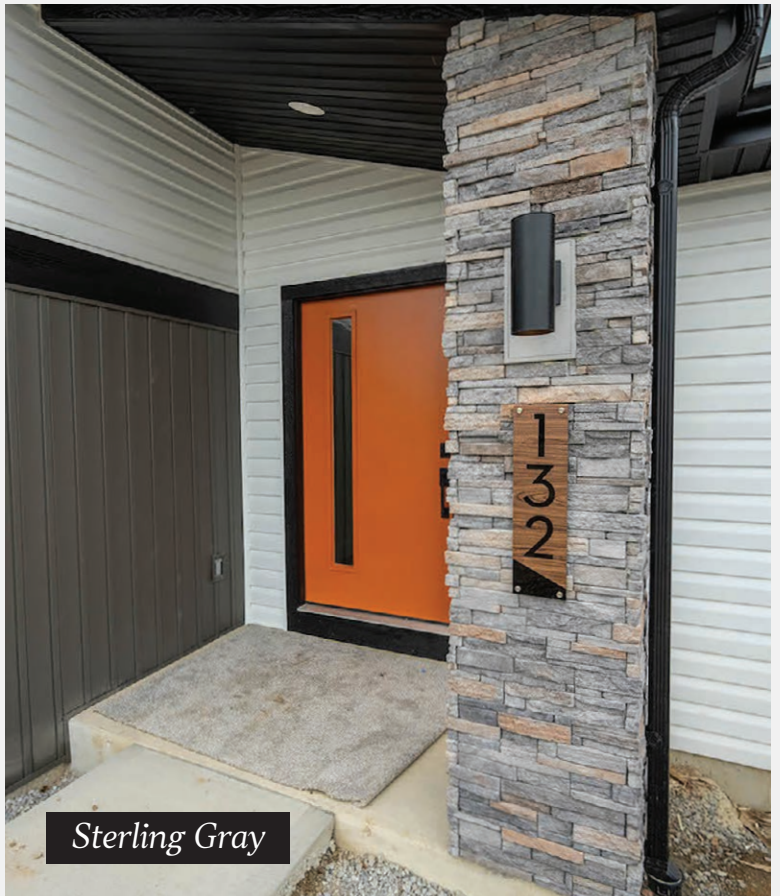
*Rocca*



Onyx



Granger



Sterling Gray

# ACCESSORIES

## KEYSTONES & TRIMSTONES



Chamfered Smooth  
3" thick



Slate  
1 3/4" thick



Slate Trimstones  
6" x 8"

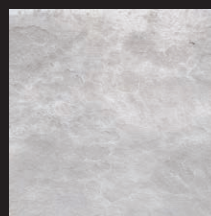
## HEARTH STONES



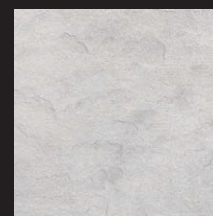
Carmel



Copperton



White



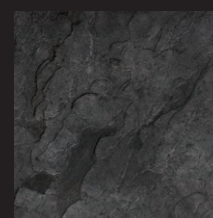
Valley Forge



Cream



Gray



Onyx

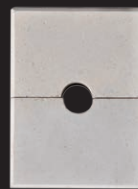
## ACCENTS



Light Block  
8" x 14"



Light Block  
8" x 10"



Spigot (2pcs)  
6" x 8"



Dryer Vent Block  
10" x 10"



Outlet Quad  
12" x 8"



Outlet Triple  
10" x 8"

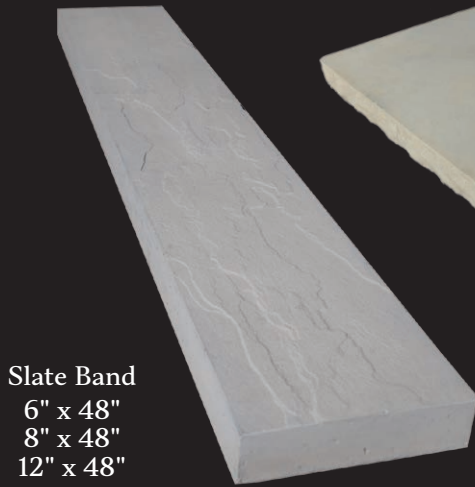


Outlet Double  
8" x 8"



Outlet Single  
5" x 8"

BANDS & CAPS



Slate Band  
6" x 48"  
8" x 48"  
12" x 48"



Pitched Pillar Caps  
2" x 18" x 18"  
3" x 22" x 22"  
3" x 24" x 24"  
3" x 26" x 26"



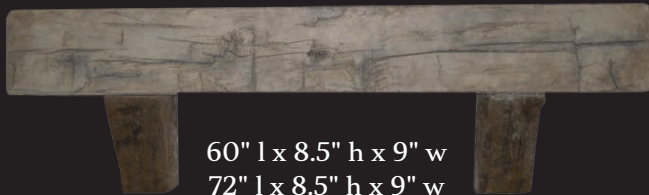
Flat Pillar Caps  
3" x 16" x 16"  
3" x 22" x 22"  
2 1/4" x 20" x 20"  
2 1/4" x 24" x 24"  
2 1/4" x 26" x 26"



Pitched Wall Caps  
2 1/4" - 13" x 36"  
2 1/4" - 15" x 36"

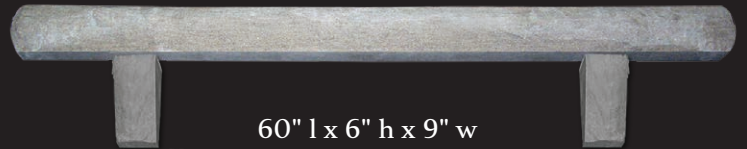
MANTELS

BARN BEAMS  
*(Copperton Only)*



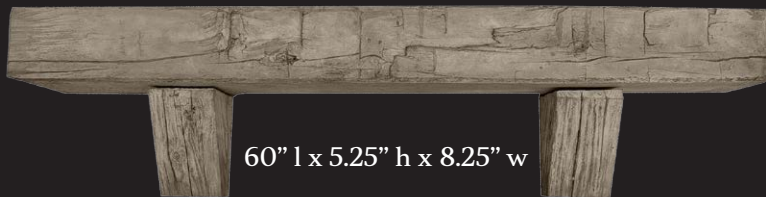
60" l x 8.5" h x 9" w  
72" l x 8.5" h x 9" w

CONCRETE LIMESTONE BEAMS  
*(All Colors)*



60" l x 6" h x 9" w  
72" l x 6" h x 9" w

SKINNY BARN BEAM  
*(Copperton Only)*



60" l x 5.25" h x 8.25" w

WINDOW SILLS



Brick 300 Series Soldier Course  
2" x 7 5/8" x 2 1/4"



Brick Rowlock  
3 3/4" x 3 1/2" x 24"



Window Sill  
3" x 23 1/2"

ADDRESS BLOCKS



Shutter Block  
8" x 14"



Address Block w/ Border  
8" x 12", 8" x 16"



Address Block  
5" x 12", 5" x 16", 8" x 12", 8" x 16"

# GENERAL PATTERN SPECIFICATIONS

PATTERN	APPROXIMATE FLAT SIZES	APPROXIMATE CORNER RETURN SIZES	APPROXIMATE THICKNESS	APPROXIMATE WEIGHT (LBS)
Ashlar	Height varying from: 2" to 10 1/2" Length varying from: 5 1/2" to 21 3/4"	Height varying from: 2" to 10 1/2" Length varying from: 5 1/2" to 15"	Varying from: 1 1/4" to 2 1/2"	Flat: 11.2/sq. ft Corner: 12.6/l.n. ft
Brick-Ease	100 Series Height: 2 1/4" Length: 7 5/8" 200 Series Height: 2" Length: 8"	100 Series Height: 2 1/4" Length: 3 5/8" and 7 5/8" 200 Series Height: 2" Length: 3 5/8" and 8"	100 and 200 Series: 1 1/4"	Flat: 10/sq.ft. Both series Corner: 12/sq.ft. Both series
Clifftrock	Height varying from: 1 1/2" to 6 1/2" Length varying from: 7" to 20"	Height varying from: 2" to 4 1/2" Length varying from: 5" to 16"	Varying from: 1" to 3"	Flat: 12.5/sq. ft Corner: 13/l.n. ft
Cut Cobblestone	Height varying from: 3 1/2" to 9 1/2" Length varying from: 5 1/4" to 16"	Height varying from: 3 3/4" to 14" Length varying from: 5 1/4" to 13 3/4"	Varying from: 1 1/4" to 2 1/2"	Flat: 10.4/sq. ft Corner: 14.3/l.n. ft
Fieldstone	Height varying from: 2 1/2" to 9 1/2" Length varying from: 4" to 14 1/2"	Height varying from: 4" to 9 1/2" Length varying from: 5" to 9"	Varying from: 1" to 2 3/4"	Flat: 10.9/sq. ft Corner: 9.7/l.n. ft
Handsplit	Height varying from: 3 1/2" to 12" Length varying from: 2 1/2" to 21"	Height varying from: 4" to 12" Length varying from: 5 1/2" to 11"	Varying from: 1" to 2 3/4"	Flat: 10.1/sq. ft Corner: 8.5/l.n. ft
Laytite	Height varying from: 1 1/4" to 4" Length varying from: 5 1/2" to 19 3/4"	Height varying from: 2" to 4 1/2" Length varying from: 5" to 13 1/2"	Varying from: 1" to 3"	Flat: 12.4/sq. ft Corner: 12.8/l.n. ft
Ledge	Height varying from: 2" to 9 1/2" Length varying from: 6" to 15 1/2"	Height varying from: 2" to 9 1/2" Length varying from: 6" to 14 1/2"	Varying from: 1" to 3"	Flat: 12.5/sq. ft Corner: 14.1/l.n. ft
Monarch	Height varying from: 4" to 10 1/2" Length varying from: 6 3/4" to 12"	Height varying from: 4" to 10 1/2" Length varying from: 6 1/2" to 12"	Varying from: 1" to 2 1/4"	Flat: 9.1/sq. ft Corner: 8.8/l.n. ft
Plankwood	Flat 3"x23 1/2", 6"x23 1/2"	No corners	Varying from: 3/4" to 1"	Flat: 10/sq. ft
Quartz	Height varying from: 1 1/4" to 9 1/2" Length varying from: 5 1/4" to 16"	Height varying from: 2" to 14" Length varying from: 5 1/4" to 14 1/2"	Varying from: 1" to 3"	Flat: 12.5/sq. ft Corner: 7.5/l.n. ft
Ridgestone	Height varying from: 1 1/4" to 9 1/2" Length varying from: 5 1/2" to 19 3/4"	Height varying from: 2" to 14" Length varying from: 5" to 13 3/4"	Varying from: 1" to 3"	Flat: 11.4/sq. ft Corner: 7.5/l.n. ft
Stack-Ease	Flat 3" x 10", 3" x 20"	3" x 6", 3" x 12" Flat corners with no return	Varying from: 3/4" to 1 1/2"	Flat: 8.9/sq. ft Corner: 13.6/l.n. ft

Note: All short side corner returns vary from 2 1/4" to 2 1/2" in all stone patterns.

# STONE AND ACCESSORY COLORS

STONE COLOR	STYLE OPTIONS	ACCESSORY COLOR
Ambridge	Clifftrock, Ledge, Laytite	Cream
Anagnos	Ashlar, Monarch	Carmel
Arkansas	Ashlar, Clifftrock, Cut Cobble, Laytite, Ridgestone	Carmel
Baugo Creek	Cut Cobble, Fieldstone, Handsplit	Cream
Baugo Rust	Fieldstone, Handpslit	Cream
Belgrade	Ashlar, Clifftrock, Cut Cobble, Laytite, Ridgestone, Stack-Ease	Carmel
Blizzard	Clifftrock, Laytite	Cream
Bucks Creek	Ashlar, Clifftrock, Cut Cobble, Handsplit, Laytite, Monarch, Quartz, Ridgestone	Cream
Bucks Creek Sage	Ashlar, Clifftrock, Laytite, Ridgestone	Cream
Canyon Gray	Ashlar, Clifftrock, Cut Cobble, Laytite, Quartz, Ridgestone	Carmel
Chardonnay	Clifftrock, Laytite	Carmel
Charleston	Clifftrock, Cut Cobble, Laytite, Stack-Ease	Gray
Copperton	Ashlar, Clifftrock, Cut Cobble, Laytite, Quartz, Ridgestone, Stack-Ease	Copperton
Country	Ashlar, Cut Cobble, Laytite, Ridgestone	Cream
Dakota	Clifftrock, Cut Cobble, Laytite, Quartz, Ridgestone	Copperton
Desert Tan	Clifftrock, Cut Cobble, Laytite	Carmel
Fawn River	Ashlar, Clifftrock, Cut Cobble, Laytite, Ridgestone, Stack-Ease	Cream
Fox River	Ashlar, Clifftrock, Cut Cobble, Laytite, Monarch, Quartz, Ridgestone	Cream
Galveston Gray	Clifftrock, Cut Cobble, Laytite, Ridgestone, Stack-Ease	Carmel
Graphite	Clifftrock, Laytite, Ridgestone	Gray
Grand Rapids	Fieldstone	Cream
Granger	Laytite, Stack-Ease	Copperton
Hampton Gray	Clifftrock, Laytite, Quartz, Ridgestone	Gray
Harbor Gray	Clifftrock, Laytite, Ridgestone	Gray
Heritage	Ashlar, Clifftrock, Cut Cobble, Laytite	Carmel
Indiana/Michigan	Fieldstone, Handsplit	Gray
Iron	Clifftrock, Laytite, Ledge	Gray
Lockport	Clifftrock, Cut Cobble, Laytite, Stack-Ease	Gray
Monticello	Ashlar, Clifftrock, Cut Cobble, Laytite	Cream
Mountain	Clifftrock, Cut Cobble, Fieldstone, Laytite, Ridgestone	Cream
Mystic Gray	Ashlar, Clifftrock, Cut Cobble, Laytite, Quartz, Ridgestone, Stack-Ease	Gray
Onyx	Laytite, Stack-Ease	Onyx
Platinum	Stack-Ease	
Price	Clifftrock, Cut Cobble, Laytite, Ledge, Quartz, Ridgestone, Stack-Ease	Carmel
Refton	Ashlar, Ledge, Laytite	Gray
Rocca	Ashlar, Clifftrock, Laytite, Ridgestone, Stack-Ease	Gray
Sterling Gray	Ashlar, Cut Cobble, Ledge, Stack-Ease	Gray
Whiteland	Ashlar, Cut Cobble, Ledge	White
Brick Colors	Adams Creek, Autumn, Desert Tan, Rustic, Standard Red, Used Red, Whiteland	
Plankwood Colors:	Natural, Timber, Weathered, Whitewashed	



For more information about J & N Stone, Inc. products and services, contact a sales representative or visit us on the web at [www.jnstone.com](http://www.jnstone.com).

*J&N Stone Locations:*

**Corporate**

905 E. Waterford St.  
Wakarusa, IN 46573  
Tel: 574-862-4251  
Fax: 574-862-2944  
1-800-321-1372

**Grabill, IN**

13729 David Dr.  
Grabill, IN 46741  
Tel: 260-627-2404  
Fax: 260-627-0592

**Bultema Brothers Supply**

***DBA J&N Stone, Inc***

1430 Godfrey Ave SW  
Wyoming, MI 49509  
Ph: (616) 245-1125  
Fax: (616) 245-1126

*Follow us on:*



[www.facebook.com/jnstoneinc](http://www.facebook.com/jnstoneinc)



[www.pinterest.com/jnstoneinc](http://www.pinterest.com/jnstoneinc)

**COLOR VARIATION DISCLAIMER**

Because J&N Stone, Inc. replicates natural stone, variations should, and can be expected. Colors are shown as accurately as possible; however, due to photographic and printing techniques – and actual viewing conditions – the perception of color can alter. We recommend making your final color selection from actual samples.

**AUTHORIZED DEALER:**

Photos in this brochure are the exclusive product and workmanship of J & N Stone, Inc. It is illegal to use this publication to sell any other manufactured stone veneer. Additional information about technical support, codes and warranty can be obtained by calling J & N Stone, Inc.



[www.jnstone.com](http://www.jnstone.com)  
2024